

◀ GOOD PRACTICE INFORMATION ▶



Lifting Column Reinforcement Cages

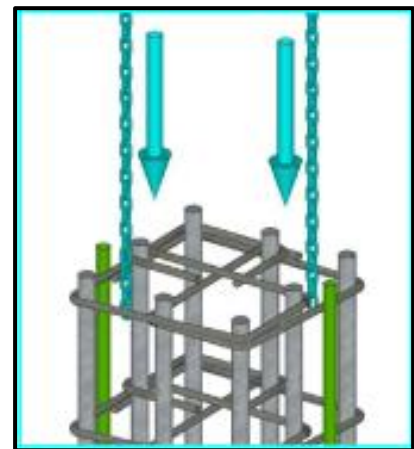
Description:

At C530 Woolwich, reinforcement cages are being pre-fabricated at ground level to reduce the risk when working at height.

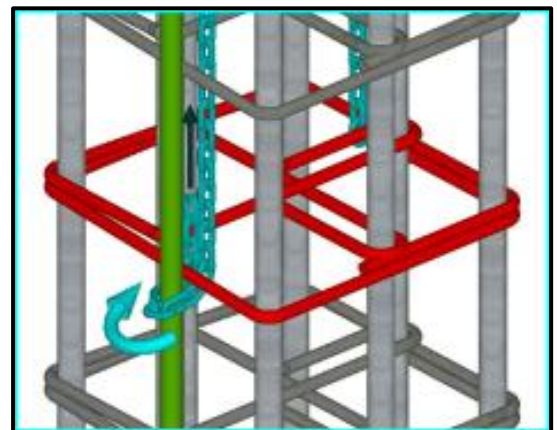
A chocking bar is fixed to two opposite sides of the cage and tied to the lowest three shear links. The lifting chains are fed through the centre of the rebar cage, and around the external chocking bar below the lifting link, then fed back up through the cage to ensure a secure bond.

Once lifting operations are completed and the rebar cage is fixed in the desired position, operatives remove the chocking bars by unfastening them from the bottom three shear links.

This process removes any working at height, as all works can be completed by operatives at ground level.



Lifting chains being fed through the centre of the rebar cage



Lifting chains being secured to the chocking bar